

Dragsfjärdsvanten

- a traditional mitten from Dragsfjärd,
Kimito Islands



This traditional mitten was chosen to represent the Åboland region in a competition in 1986. But the actual motif can be found on a table cloth designed already in 1937 by Edith Henriksson.

This version of the pattern is translated into English and slightly modernised and digitalised.

Materials:

Yarn: DK yarn in two colors approx. 240m/100g. Yarn used in the pattern is Vuonue Pentti.

Needles: Knitting needles 2.25mm for a small mitten or 2.5mm if you want to knit a medium or large mitten.

Gauge: 27 sts = 10 cm

A piece of **scrap yarn** or cord for placing the thumb sts on hold, **tapestry needle**

Directions:









Cast on 54 stitches in MC and knit the cuff in p1, k2 rib as follows:
12 rows in MC, 3 rows in CC, 2 rows in MC, 1 row in CC, 2 rows in MC,
3 rows in CC, 8 rows in MC.

Using MC knit 1 row and increase 3 sts evenly. If you prefer to knit the pattern using the Ladder back Jacquard – technique (link to tutorial below) use this row to create the extra ladder sts.

Start knitting according to chart A. On row 20, put the 15 thumb sts on hold, CO 7 new thumb sts and continue in pattern. On row 67, break yarn, leaving a length of approx. 15 cm. Thread yarn through a tapestry needle and graft closed using Kitchener Stitch. Pick up the 15 thumb sts that are on hold and pick up 14 new sts from the edge of the thumbhole. Knit the thumb according to chart B. On row 26, break yarn, leaving a length of approx. 15 cm. thread yarn through a tapestry needle and graft closed using Kitchener Stitch.

Knit the right mitten as a mirror the left.

Chart A

-  knit MC
-  knit CC
-  knit 2 together
-  slip, slip, knit them together
-  no stitch
-  make 1 right
-  MR
-  ML

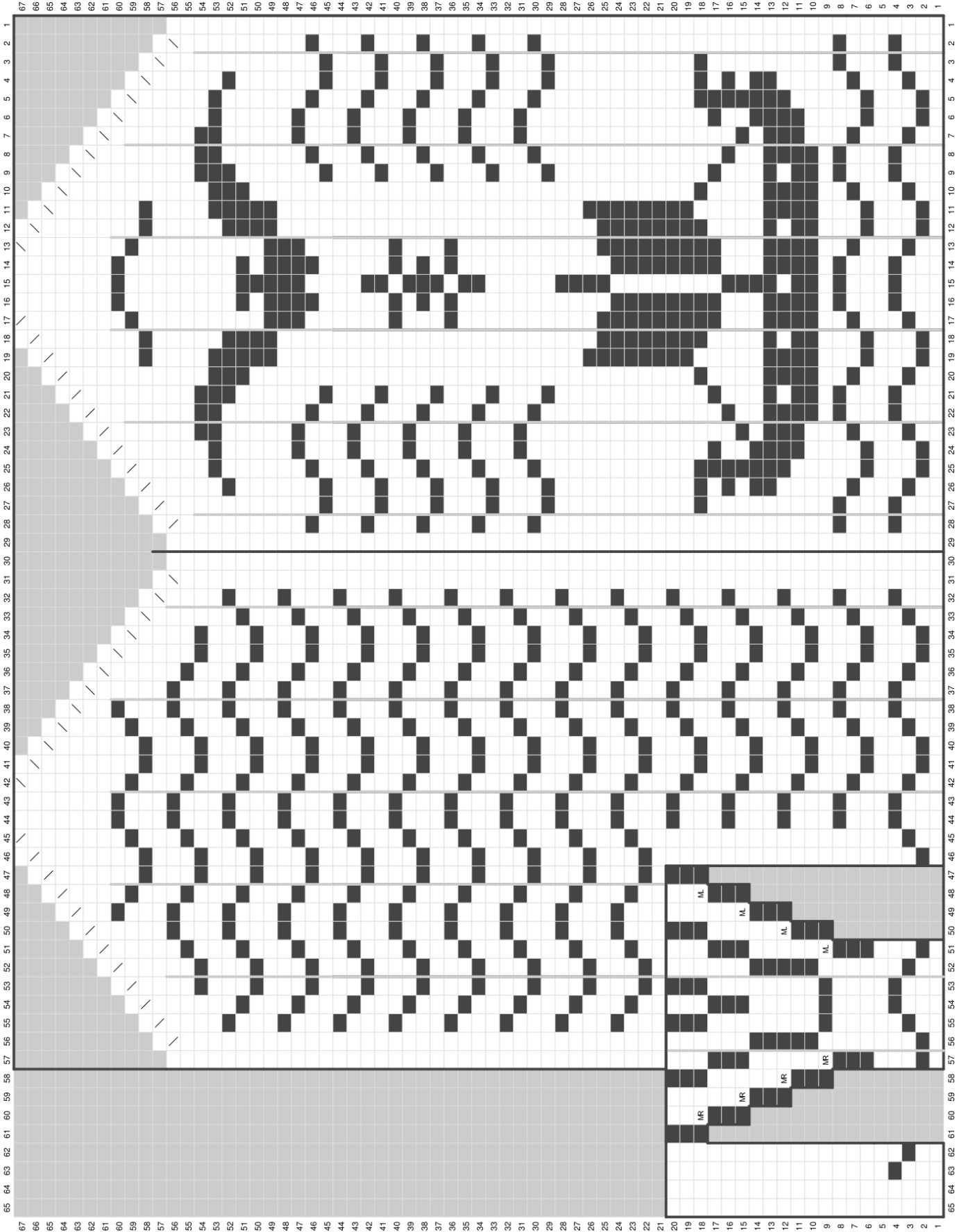
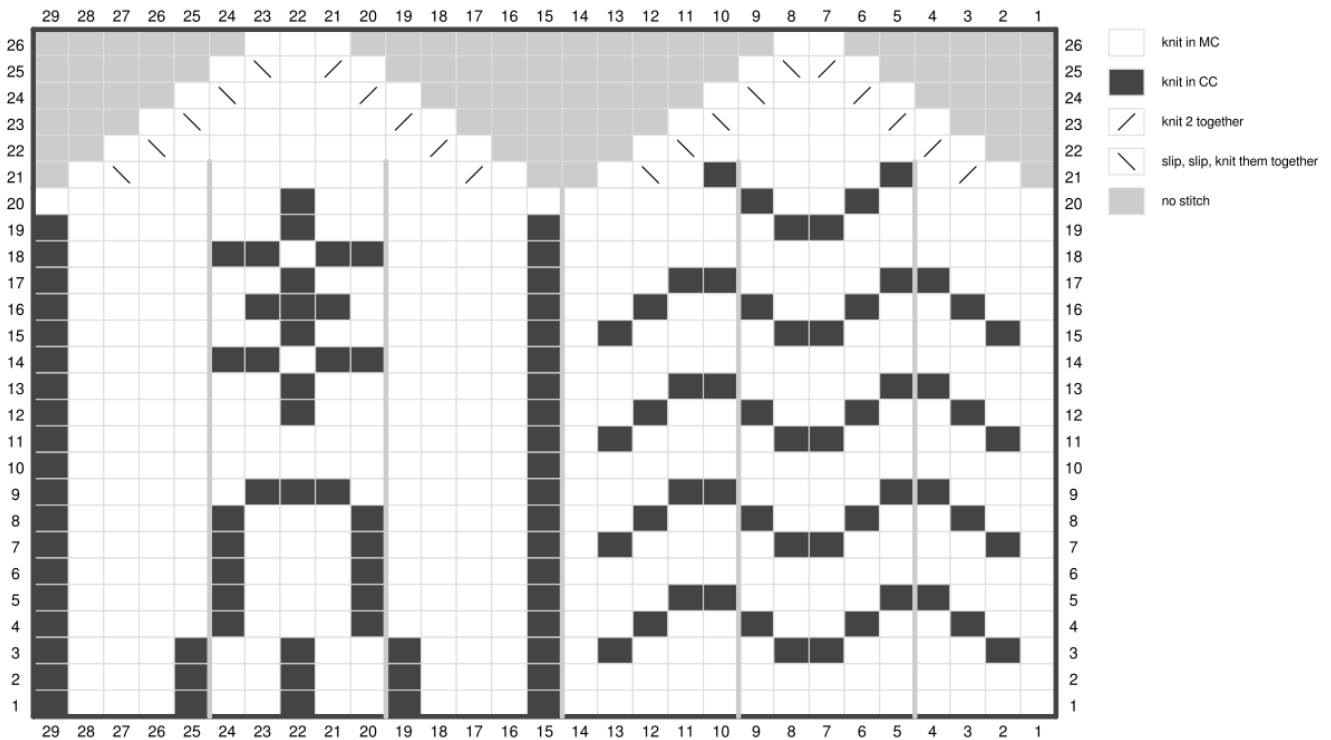


Chart B



Link to tutorial on knitting the Ladder back Jacquard -technique

<https://www.youtube.com/watch?v=UcQns-ON1nw>

Abbreviations:

CC = Contrast Color

CO = cast on

k = knit

MC = Main Color

p = purl

sts = stitches

taito

ÅBOLAND

ÅBOLANDS HANTVERK RF